

An aerial photograph of the Capitol Mall area in Sacramento, California, overlaid with various architectural and landscape design elements. The image shows the existing city grid, surrounding buildings, and proposed park spaces. A large, irregularly shaped park area is highlighted in light green, with a winding path and several circular features. To the right, a large, rectangular building with a blue roof is shown, surrounded by greenery. A purple arrow points to a specific location within the park area. The overall design is a multi-layered conceptual plan for the Cass Gilbert Memorial Park.

CASS GILBERT MEMORIAL PARK

- Multi-Generational Space
- Site Amenities and Programming
- Visitor and Annual Programming
- Precedent Imagery

An aerial map of the Cass Gilbert Memorial Park area, showing a mix of green spaces, roads, and buildings. The map is partially obscured by a large, curved, olive-green shape that covers the right side of the page. The map shows a network of streets, including a main road with a dashed center line, and several smaller streets. There are numerous green spaces, some with trees and others with grass. Buildings are shown in white with black outlines. The overall layout suggests a park area with various recreational and recreational spaces.

Transform Cass Gilbert Memorial Park
into a multi-generational space for play,
recreation and views.

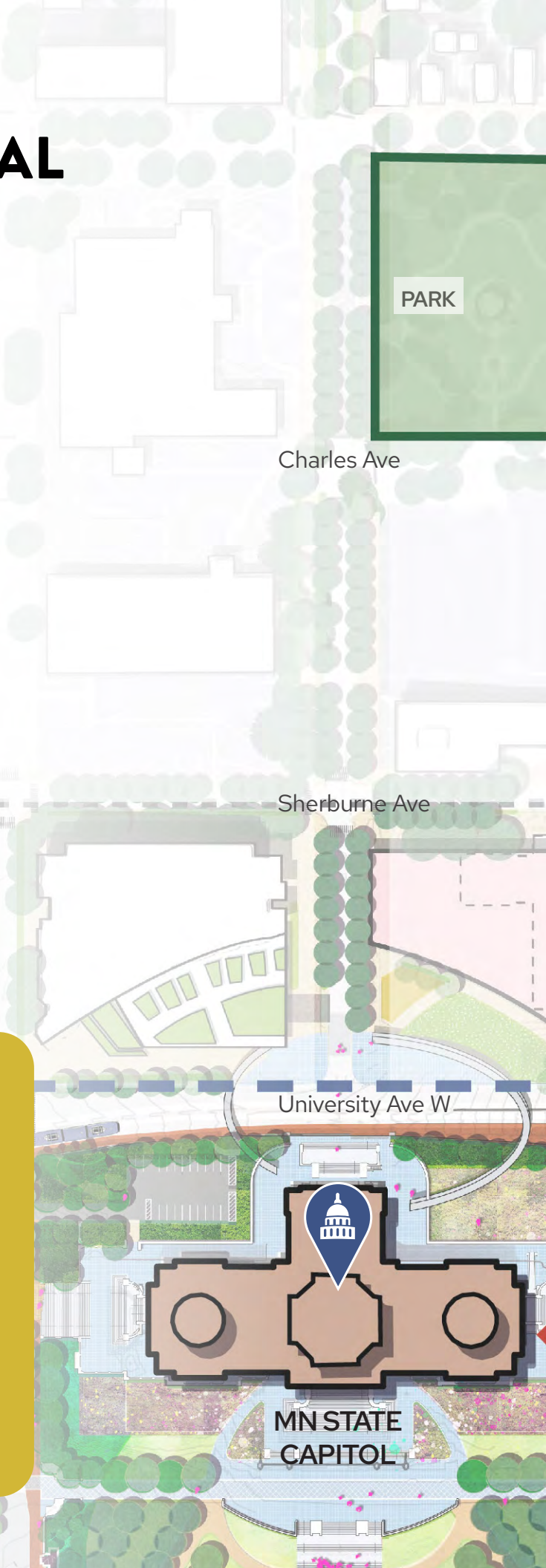
MULTI-GENERATIONAL SPACE

TRANSFORM CASS GILBERT MEMORIAL PARK INTO A MULTI-GENERATIONAL SPACE FOR PLAY, RECREATION AND VIEWS

Cass Gilbert Memorial Park's existing topography, sweeping views, and proximity to both neighborhoods and existing community assets (like the Capitol Building) make it a prime location for a public space that serves the broader community. As previously mentioned, the Capitol Mall fills a critical park gap in the City of Saint Paul. While the Upper and Lower Malls are great places to walk, picnic, and enjoy the outdoors, there is currently no space for young children to climb, swing, and play. Cass Gilbert Memorial Park can be this space and more. People of all ages and abilities can gather, play, and relax while gazing upon the Capitol Mall and Downtown. Gardens and iconic nature-based play features make Cass Gilbert Memorial Park a destination for those in the Twin Cities and beyond. Furthermore, a new discovery museum, interior event space, and cafe support additional Capitol Mall programming that was highly requested by community members and stakeholder alike.

TAKEAWAYS

- Cass Gilbert Memorial Park's existing topography, sweeping views, and proximity to both neighborhoods and existing assets (like the Capitol Building itself) make it a prime location for a public space that serves the broader community.
- Integrating diverse programming such as a children's play environment, tree groves, walking paths, an overlook and park pavilions will create a destination for varied visitor groups.





CAPITOL HEIGHTS
NEIGHBORHOOD

MT. AIRY

Valley Park

Capitol Heights

OUTDOOR
FLEXIBLE
SPACE

EXTENDED
BUS
PARKING

PLAY

NATURE
PLAY

AMENITY
BUILDING

CASS GILBERT
MEMORIAL PARK

TO REGIONS
HOSPITAL

STREETSCAPE UPGRADES

STREETSCAPE UPGRADES

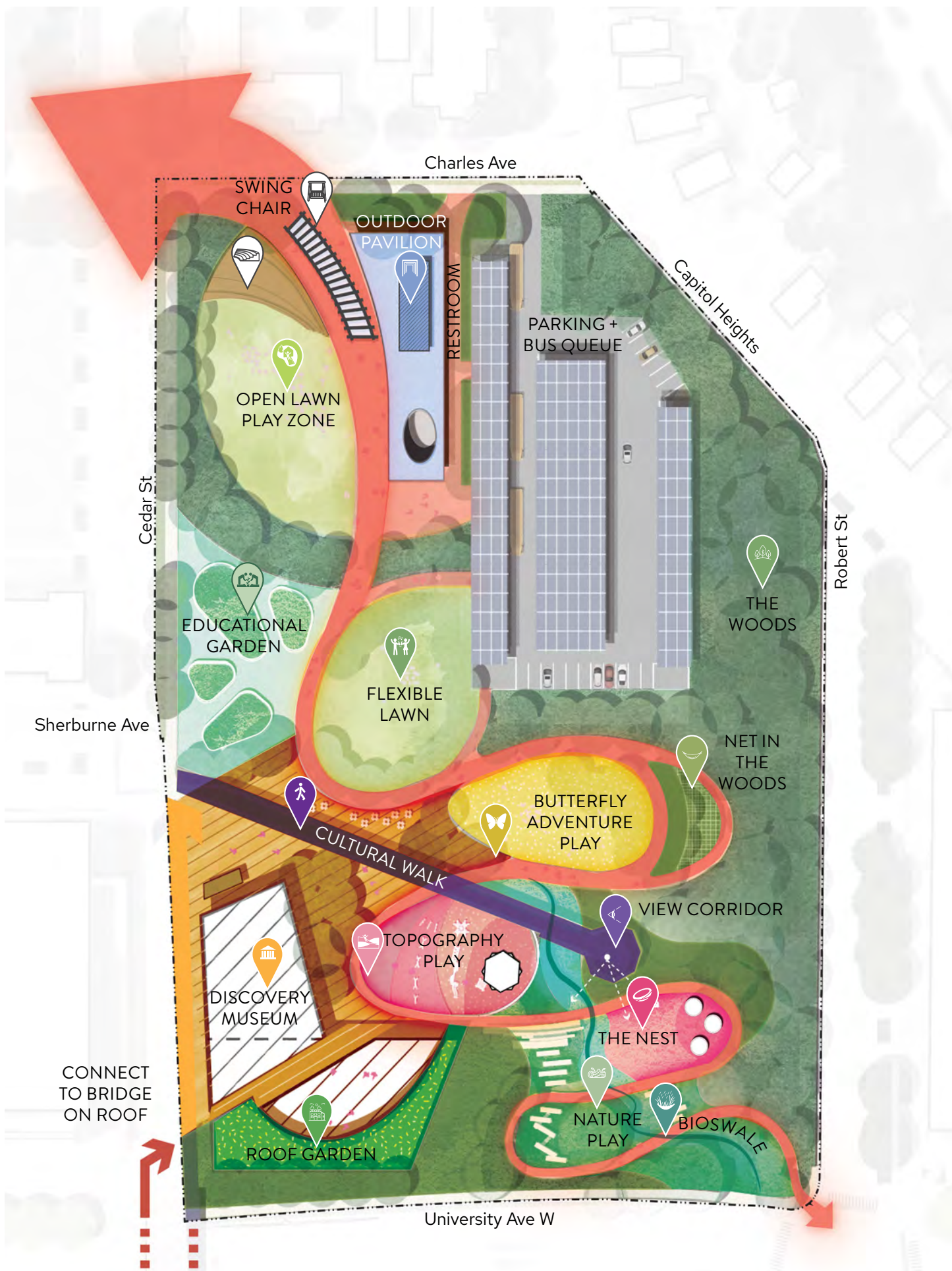
SITE AMENITIES AND PROGRAMMING

SOMETHING FOR EVERYONE

The various site amenities and programming opportunities within Cass Gilbert Memorial Park include the following:

- Solar-shaded visitor and bus parking
- Outdoor pavilion with public restrooms and shade cover
- Outdoor swings for people of all ages
- Open lawns for play and events
- Educational gardens to demonstrate Minnesota's agricultural history
- Butterfly adventure and topography play with iconic, interactive play features
- Movable furniture and other flexible seating opportunities
- Cultural walk that terminates at the original overlook
- Discovery Museum, cafe, and event space

Reference *Parking Supply and Distribution* in Right-Size the Roads for new parking strategies. A new parking structure should be considered to support the future expansion of Cass Gilbert Memorial Park. Furthermore, the loss of visitor, flexible, and contract parking at Lot Q (Cass Gilbert Memorial Park) can be captured within the proposed parking structure at the northeast corner of University and Rice Street (Lot C). Bus parking and queuing relocates to Rev. Dr. Martin Luther King Jr. Blvd and to Cass Gilbert Memorial Park.



VISITOR AND ANNUAL PROGRAMMING

VISITOR EXPERIENCE

Take advantage of a walk to the neighboring park on a day trip to the Capitol for a variety of activities made to accommodate a large group of visitors such as residents and community members, office workers to sightseers who come far for a meaningful trip.

SIGHTSEERS

- Get a nice overlook to the Capitol Building and Downtown at the Overlook
- Trace the Cultural Trail from various access points, such as the Rice Station Hub



RESIDENTS AND COMMUNITY MEMBERS

- Multi-use event spaces
- Various seating arrangements to accommodate large and small groups of users
- Connected network of pedestrian trails from Capitol Area to Capitol Heights



OFFICE WORKERS

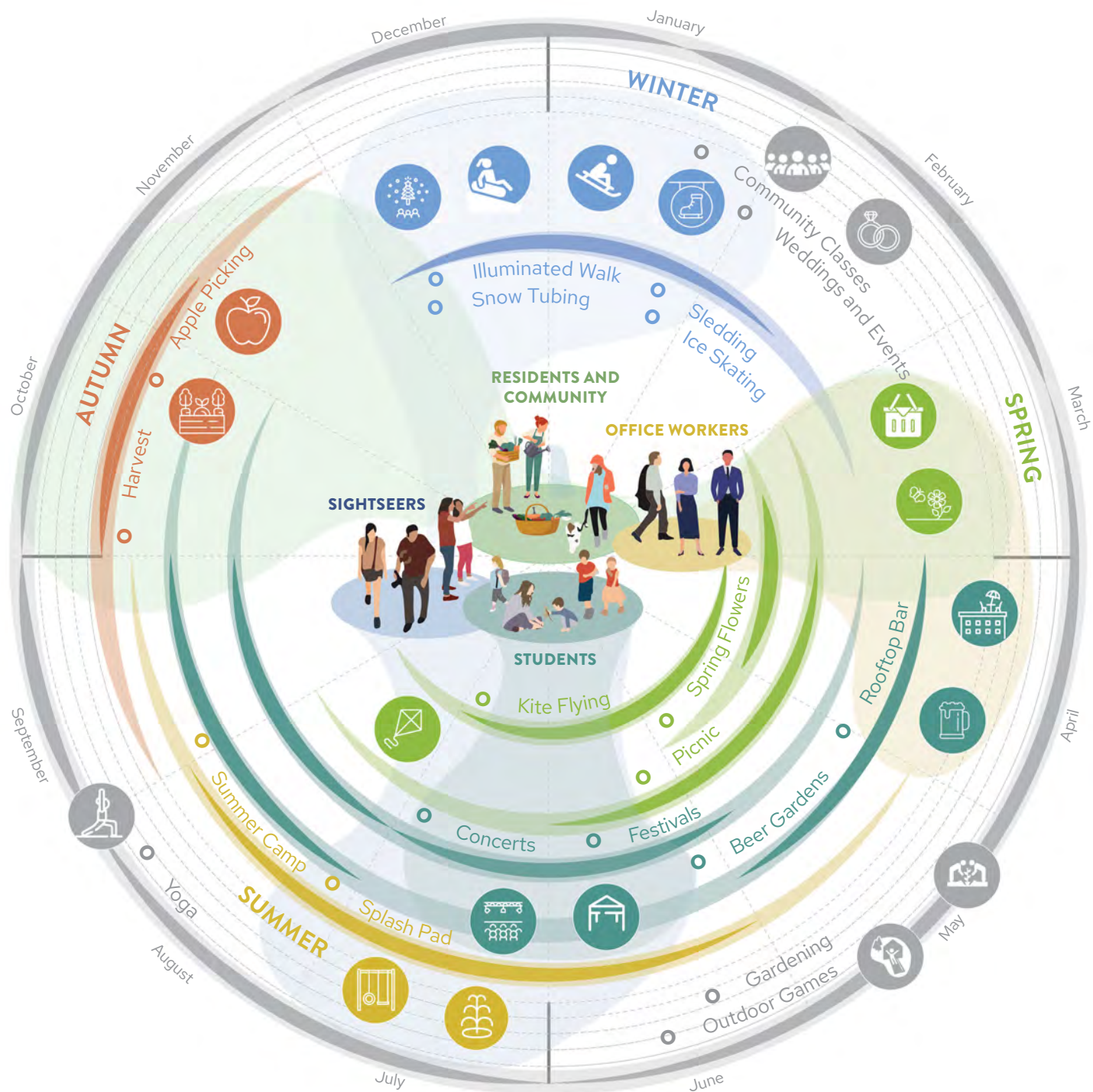
- Place for gathering after work
- Lunch spot with a view
- Flexible space easily accessible from neighborhood



STUDENTS

- Engage and learn with the Discovery Museum and Educational Garden
- Play after class at the various flexible and play areas





ANNUAL PROGRAMMING

The proposed design incorporates existing topography to build a tiered outdoor space for overlooking the Capitol Mall and Downtown while also providing opportunities for various programming. The addition of a multi-use amenity building inserted into the hill of the site folds in another level of flexibility in visitor experience with seasonality.

PARK PROGRAMMING

PRECEDENT IMAGERY



Figure 181: Levy Park, Texas

Source: OJB. *Levy Park, Texas*. 24 Oct. 2018. OJB, www.ojb.com/work/levy-park/#lg=1&slide=4.



Figure 182: Sister Cities Park, Philadelphia

Source: Studio: Brian Hanes. *Sister Cities Park, Philadelphia. Party Space*,



Figure 183: Biesbosch Museum, Netherlands

Source: Tillemann, Ronald. *Biesbosch Museum, Netherlands*. *Arch Daily*, www.archdaily.com/777852/biesbosch-museum-island-studio-marco-vermeulen.



Figure 184: Izzy's Playground, North Carolina

Source: Teplov, Ilya. *Izzy's Playground, North Carolina*. Landezine,



Figure 185: Franklin Park Conservatory and Botanical Garden, Ohio

Source: Schieber, Randall L. *Franklin Park Conservatory and Botanical Garden*.

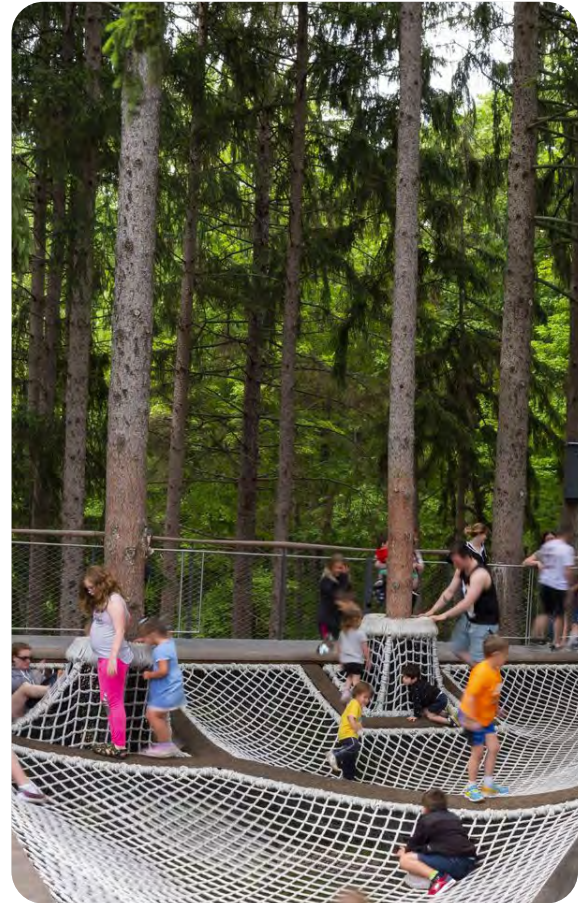


Figure 186: Whiting Forest, Michigan

Source: Lehoux, Nic. *Whiting Forest*. Caitlin Brady,



Figure 187: Clark Art Institute, Massachusetts

Source: Cheang, Becky. *Clark Art Institute, Massachusetts*. Fathom,



Figure 188: Pier 26, New York

Source: Olin Studio. *Pier 26, New York*. Olin Studio, www.theolinstudio.com/news.

CASS GILBERT PARK

CASS GILBERT PARK

RENDERING



